

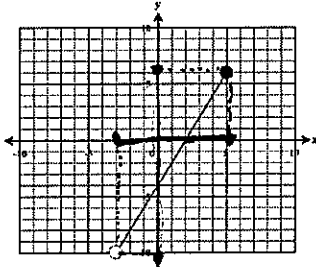
4.8 Domain and Range

Essential Question:

- How can I find domain and range?

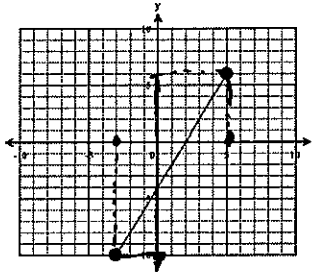
Domain: All X Values Range: All Y values

Example #2



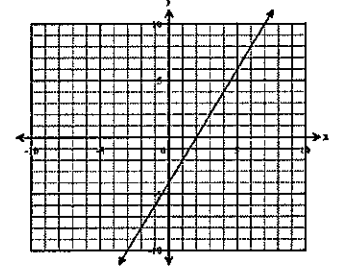
X-Domain: $(-3, 5]$
Y-Range: $(-10, 6]$

Example #3



X-Domain: $(-3, 5]$
Y-Range: $(-10, 6]$

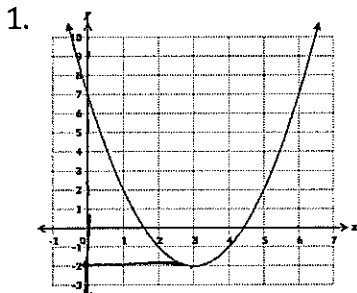
Example #4



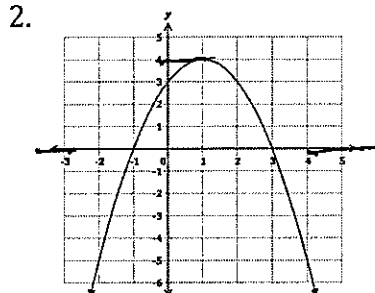
X-Domain: $(-\infty, \infty)$
Range: $(-\infty, \infty)$

Practice Exercises A

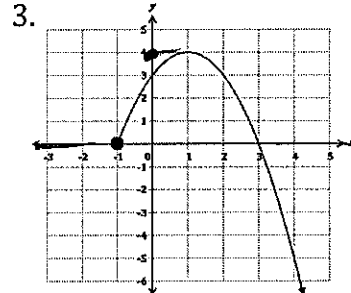
Identify the domain and range of each function.



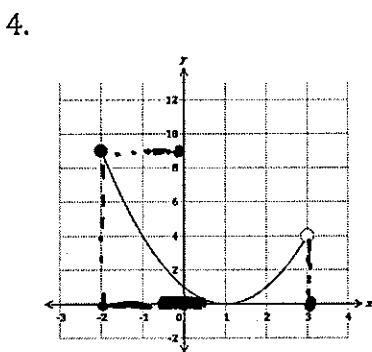
X Domain: $(-\infty, \infty)$
Y Range: $(-2, \infty)$



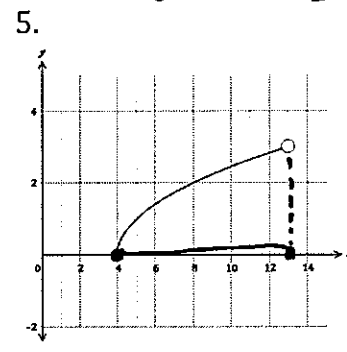
X Domain: $(-\infty, \infty)$
Y Range: $(-\infty, 4]$



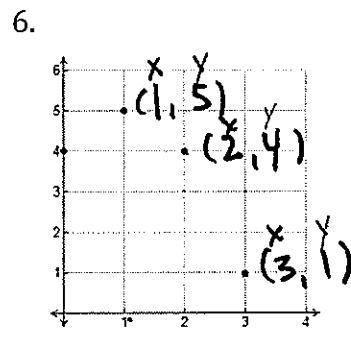
X Domain: $(-1, \infty)$
Y Range: $(-\infty, 4]$



X Domain: $(-2, 3)$
Y Range: $[0, 9]$



X Domain: $(4, 13)$
Y Range: $[0, 3)$

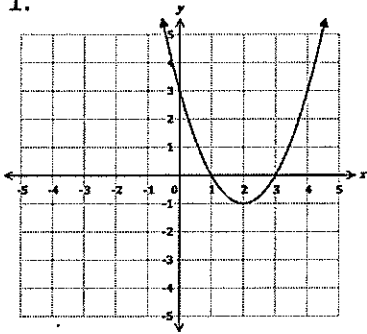


X Domain: $(1, 2, 3)$
Range: $(5, 4, 1)$

4.8 Domain and Range Assignment

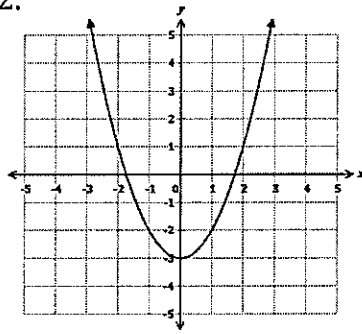
Identify the domain and range of each function.

1.



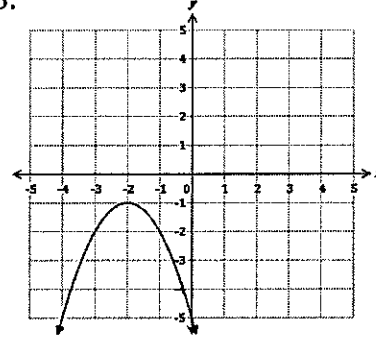
Domain:
Range:

2.



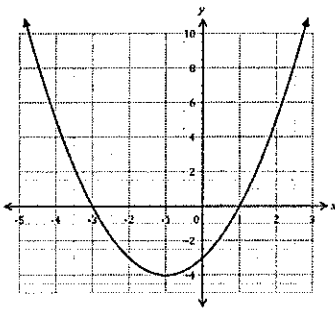
Domain:
Range:

3.



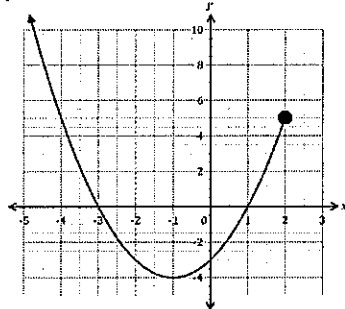
Domain:
Range:

4.



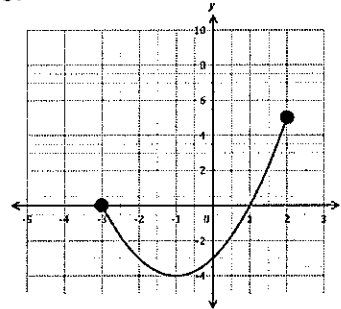
Domain:
Range:

5.



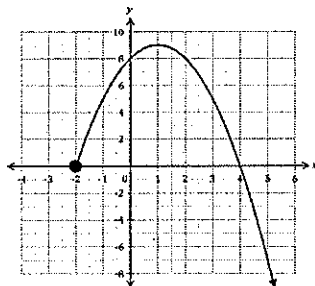
Domain:
Range:

6.



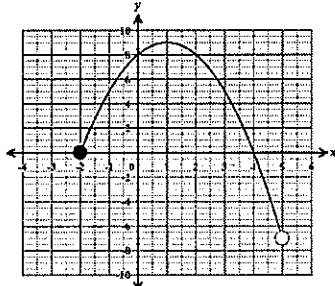
Domain:
Range:

7.



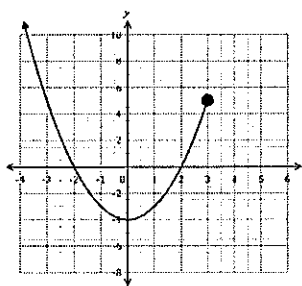
Domain:
Range:

8.



Domain:
Range:

9.



Domain:
Range: